

Mild Steel Pipes, fittings and Specials

BSEN10224, BSEN10220,
BSEN1092-1, BS6920



SINOTEC



Foshan Zhong Neng Mechanical manufacture
Co .Ltd

Address: No. 61, Jianye Si Road, Gangbei
Industrial Park, ShiZhou, Chencun Town,
Shunde, Foshan, Guangdong, P.R. China

Sole Agent: Essential Trading Co., Ltd

Address: 15/F., Toi Shan Centre, 128 Johnston
Road, Wanchai, HongKong
Tel: 28339906
Fax: 28385587
E-mail: essenthk@essential.imsbiz.com.hk

公司簡介

佛山市重能机械制造有限公司成立于2011年，位于佛山市顺德区陈村镇，毗邻陈村大道、广珠西线，地理位置优越，交通便利；公司占地面积2万多平方米，分四大厂房，现拥有众多专业的大型生产设备，包括卷板机、吊车、滚轮架、自动焊机、数控切割、无损检测等，并配有专业的试压、打砂及环氧树脂防腐喷漆等场地和设备。

公司的主要产品分两大板块，第一是压力容器，包括塔类、罐类、换热器等Ⅰ、Ⅱ类压力容器；第二是钢结构产品，其中包括水务工程用钢管、接头及配件、输油钢管、钢管桩，以及其他钢结构工程及产品等。产品符合英国标准（BS）、美国石油协会标准（API）、中国国家标准（GB）等。

公司已成功取得国家第一和第二类压力容器制造许可证，并顺利通过ISO9001：2008质量体系认证。我们凭借专业的生产团队、雄厚的技术力量、先进的生产工艺、齐全的工装设备、稳定可靠的产品质量，赢得中国内地、港、澳、东南亚、美国等地客户的一致好评和信赖。我们将继续在追求经济效益的同时，注重工程产品质量、信誉和社会效益，竭诚为客户提供货期准、信誉好、品质优的产品。



Company Introduction



Foshan Zhong Neng Mechanical Manufacture Co., Ltd was found in 2011. It is located on Chencun town, Shunde district, Foshan city, China, with good location and convenient transportation as it is contiguous to Chencun Road and Guangzhou-Zhuhai West Line. The company occupies over 20,000m² with four main workshops. Many professional equipments are introduced such as plate bending rolls, cranes, roller carriers, automatic welders, NC (numerical control) cutters and NDT (non destructive testing) equipments etc. At the same time, it is equipped with hydraulic testing platform, blast cleaning room, epoxy spray paint field and the corresponding equipments.

The company's main products are divided into two sections. One of the two main sections is pressure vessel products (D1 & D2), such as columns, tanks and heat exchangers. Apart from the former, the company mainly manufactures many kinds of steel structure products as steel pipes, joints, steel pipes for transfer of oil, steel pipe piles and other products in accordance with British Standard (BS), American Petroleum Institute (API) Standard, National Standard etc. Meanwhile, the company has been awarded Manufacture License of Special Equipment and ISO9001: 2008 Quality System Certificate. With a professional team, powerful technical force, advanced technology, well equipments and guaranteed quality, the company win the consistent high praise and trust of our clients from all over the world. In pursuing the economic benefits, we pay great attention to the products' quality, the enterprise credibility and the social benefits.

We sincerely provide the clients with punctual delivery, well reputation and good quality products.

Field & Equipments 生產場地和設備

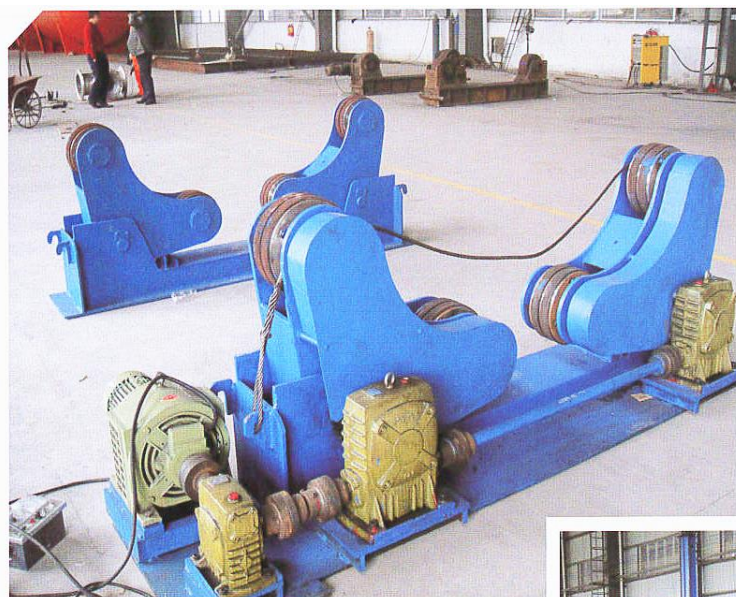


卷板机/Plate bending rolls

型号: CDW11NC-25 X6000

功率: 245MPa

Field & Equipments 生產場地和設備



滚轮架/Roller carrier

型号: ZN-20t



卷板机/Plate bending rolls

型号: W11S 30X2500

功率: 245MPa



十字臂焊接架/

The cross-arm welding equipment

型号: HJ-4x6



Manufacture License Of Special Equipment

特種設備製造許可證

中华人民共和国 特种设备制造许可证

Manufacture License of Special Equipment
People's Republic of China

(压力容器)

编号: TS2244147-2017

单位名称: 佛山市重能机械制造有限公司

注册地址: 广东省佛山市顺德区陈村镇石洲村委会岗北工业区建业四路 6
号之一

经审查, 获准从事下列压力容器制造:

级别	品种范围	备注
D1	第一类压力容器	/
D2	第二类压力容器	/

审批机关: 广东省质量技术监督局
有效期至: 2017 年 4 月 11 日

发证机关: 
发证日期: 2013 年 4 月 12 日

国家质量监督检验检疫总局制

Pressure Vessel Introduction 壓力容器介紹

压力容器是盛装气体或者液体，承载一定压力的密闭设备，一般分为固定式压力容器和移动式压力容器。其范围规定为工作压力大于或者等于0.1MPa（表压），且压力与容器的乘积大于或者等于 $2.5\text{MPa} \cdot \text{L}$ 的气体、液化气体和工作温度高于或者等于标准沸点的液体的固定式容器和移动式容器。

压力容器按在生产工艺过程中的作用原理，分为反应压

力容器、换热压力容器、分离压力容器和储存压力容器。压力容器按承受压力的等级可分为低压容器、中压容器、高压容器以及超高压容器。根据国标GB150-2011规定，目前我司取得证件所允许的制造范围为第一类低压压力容器（D1级）和第二类低、中压压力容器（D2级）。



Pressure vessels are sealed equipment for gas or liquid, carrying a certain pressure, generally divided into stationary pressure vessel and the transportable pressure vessel. It stipulates that the working pressure of the vessels is greater than or equal to 0.1MPa (g), as well as the product of the pressure and the volume is greater than or equal to $2.5\text{MPa} \cdot \text{L}$ gas or liquefied gas; and that the working temperature

of liquid in the vessels is higher than or equal to the liquid in normal boiling point.

According to the principle of pressure vessel in the production process, pressure vessel can be divided into the reactor pressure vessels, heat transfer pressure vessels, separation pressure vessels and storage pressure vessels. According to the pressure level, it can be divided into low pressure vessel, medium pressure vessel, high pressure vessel and ultrahigh pressure vessel. In terms of the requirements in the national standard GB150-2011, at present, the certificate our company has been awarded is allowed to manufacture the first class pressure vessel (D1) and the low or medium pressure vessel of the second class (D2).

Pressure Vessel Products 壓力容器產品



T-702抽提蒸馏塔下段
T-702 Extractive Distillation Column
(塔体共分三段 总长54.428米) /
The body of the column is divided into three parts, and the above image shows the bottom part. (Total length of the column: 54.428m)



脱硫塔/Desulfurization Tower
规格/Specification:
OD1200mm X 12mm X 16800mm



抽提蒸馏塔(T-702, 图左)和溶剂回收塔(T-703, 图右)现场安装图
Extractive Distillation Column (T-702, the left column)
and Solvent-recovery Column (T-703, the right column)
are completely installed.



图为脱硫塔现场安装 (带平台、安全笼)
The above image is the overall view of the
desulfurization tower (with platforms and safety
cage) after installation.



Pressure Vessel Products 壓力容器產品



溶剂回收塔/Solvent-recovery Column
规格/Specification: OD1600mmX16mmX20000mm



冷凝器/Condenser
规格/Specification: OD3800mmX20mmX12000mm



浓硫酸罐/Concentrated Sulfuric Acid Tank
规格/Specification: OD2200mmX12mmX5800mm



塔身周围平台
Platforms around the column



Quality Management System Certificate

質量管理體系認證證書



UNIVERSAL CERTIFICATION CENTRE CO., LTD.
QUALITY MANAGEMENT SYSTEM CERTIFICATE

No.: UKQ1309025R0

This is to certify that the quality system of

FOSHAN ZHONGNENG MECHANICAL MANUFACTURE CO., LTD.

(ADD: NO.6 1ST, JIANYE SI ROAD, GANGBEI INDUSTRIAL PARK, SHIZHOU, CHENCUN TOWN, SHUNDE,
FOSHAN, GUANGDONG, P. R. CHINA ZIP: 528300)

is in conformity with:

ISO9001:2008

This system is valid to:

***PROCESSING, MANUFACTURE AND SALES SERVICE OF
STRUCTURAL STEEL SERIES PRODUCTS, INCLUDING STEEL PIPES,
FITTINGS AND STEEL PIPE PILES FOR WATER SUPPLY WORKS***

Issue date: 09-17-2013

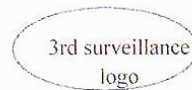
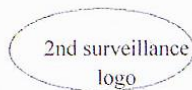
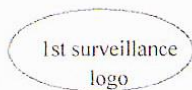
This Certificate is validity until: 09-16-2016

(The surveillance audits shall be performed in a yearly manner during the validation. The continual effectiveness of the certificate shall be marked by the surveillance qualification logo as pasted below.)

Organization stamp:



Representative of the centre (Director):



241

Certification Body Contact: [Http://www.ucccert.com](http://www.ucccert.com) Tel: (+86 755) 83355888 Add: 6/F, YuHe Building, Qiaoxiang Road, Shenzhen, P.R. China

Pipes, Joints & Fittings Of Water Project

水務工程鋼管，接頭及配件



平口水管 / Plain end Pipes



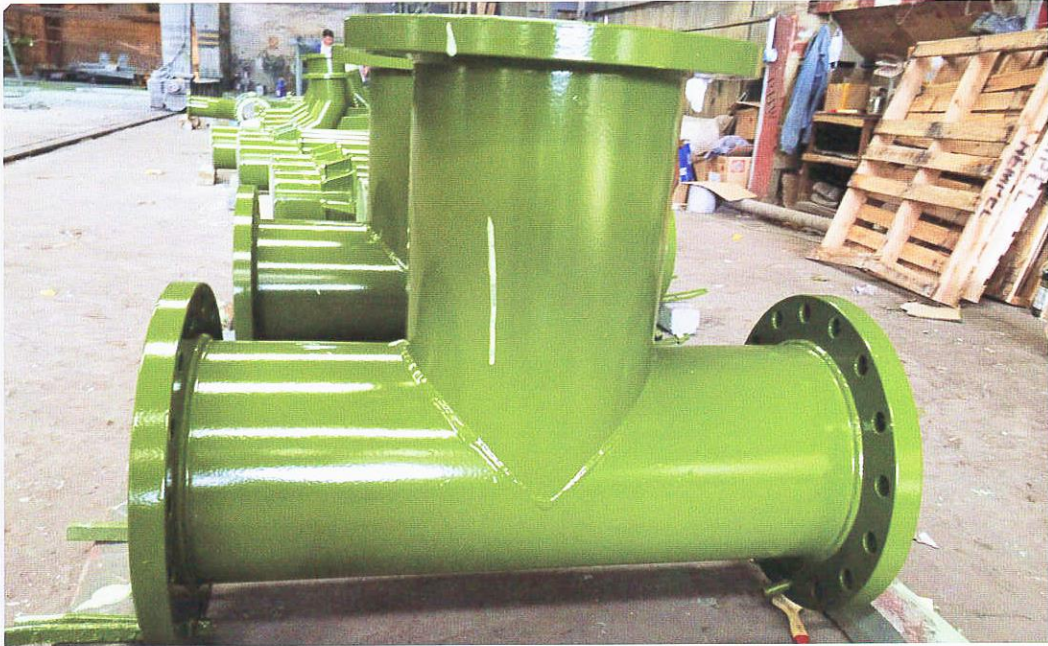
大细头管Socket and Spigot Pipe



双法兰管/Double Flange Pipes

Pipes, Joints & Fittings Of Water Project

水務工程鋼管, 接頭及配件



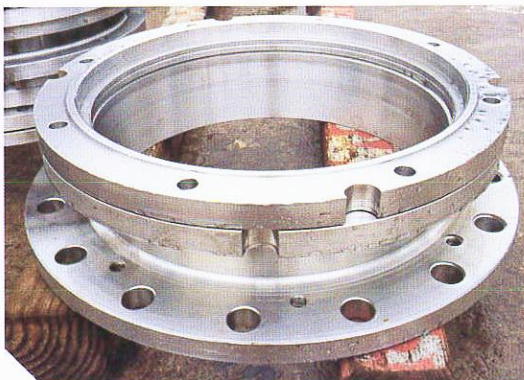
全法兰三通/All Flange Tee



接适配器的三通/
Tee for Connecting Adaptors



90度带支座双法兰弯头/
90 Deg Double Flange Bend with bearing



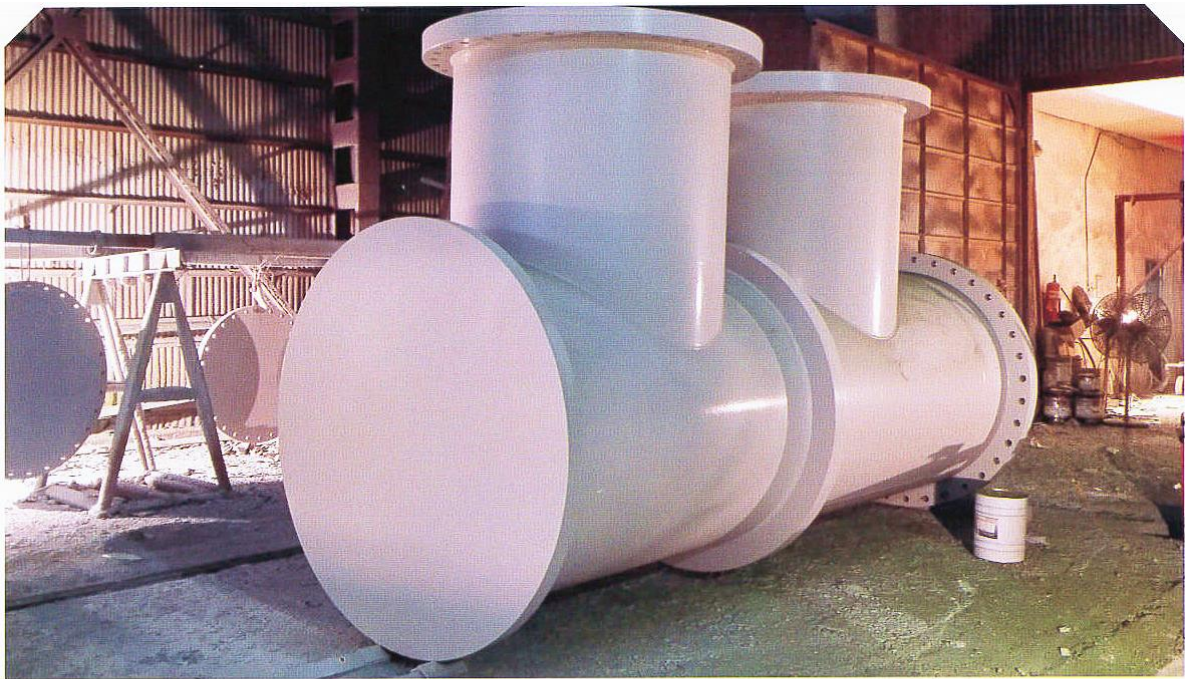
不锈钢法兰适配器/
Stainless Steel Flange Adaptor



不锈钢双法兰同心锥管/
Stainless Steel Concentric Reducer
规格/Specification:OD405mmX400mm(高/H)

Pipes, Joints & Fittings Of Water Project

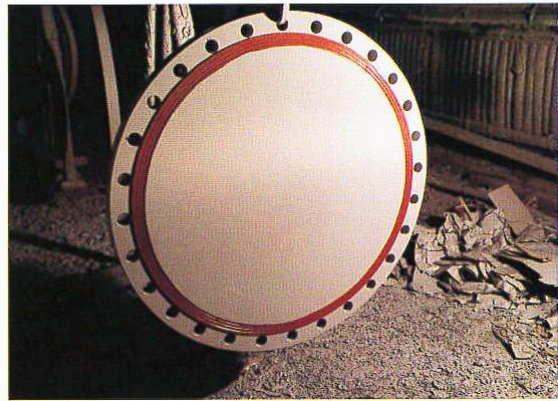
水務工程鋼管, 接頭及配件



法兰三通 /Flange Tee



DN800管环/Mild Steel Split Collar
规格/Specification:
OD833mmX8mm(厚/Thk)X250mm(高/H)



法兰盲饼/DN1200 Blank Flange



法兰 Ring Flange



法兰适配器/Flange Adaptor

Products of Steel Structure 樁管及鋼結構產品



大桩管 & 底通 / Large pipe pile bottom through & amp



大桩管/
Large pipe pile bottom through
型号: OD3200mmX25mm厚(thk)X10000mm



带咀钢管/Steel Sleeve Pipe
型号: OD1400mmx16mm厚(thk) x 2500mm长(L)



平口管 (带1个铁环, 6件三角板) /
Plain end Pipes (with one ring plate and six triangle steel plates)

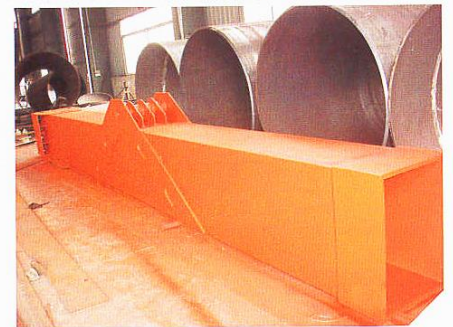
Products of Steel Structure 椿管及鋼結構產品



铁制水缸/Iron Water Tank
规格/Specification: 6000 mmX 2000mmX1500mm



铁制货架/Steel Frame
规格/Specification:
1500mmX 1300mmX2400mm



伸缩臂/Telescopic Boom
规格/Specification:
7500mmX760mmX700mm



图为厂房钢结构的一部分：金字梁（左）和立柱（右）

These two pictures are constituent parts of the steel structure factory building: crossbeam(left) and pillar(right).



DongJiang Water Mains

Manufacturer: Foshan Zhong Neng Mechanical manufacture Co .Ltd
佛山市重能機械製造有限公司
廣東省佛山市順德區陳村鎮石洲村委會崗北工業區建業四路6路之一

Sole Agent: Essential Trading Co., Ltd
匯寶工程貿易有限公司

15/F., Toi Shan Centre, 128 Johnston Road, Wanchai, HongKong

Tel: 28339906 Fax: 28385587

E-mail: essenthk@essential.imsbiz.com.hk